

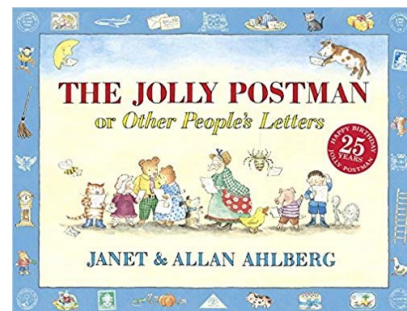
Art

Molly Rausch

Postage Stamps

Background Information

This unit of work is going to be linked to our work on '*The Jolly Postman*' by Janet and Allan Ahlberg. We will be continuing our learning about letters, but this time focusing on the postage stamps. We will learn about the work of postage stamp creator Molly Rausch and have a go at designing our own postage stamps using painting, as well as using sewing to create our own bear puppets. We will also be practicing our sketching skills as we sketch teddy bears.



In this unit the children will...

- Use a range of materials creatively to design and make products.
- Use drawing and painting to develop and share their ideas, experiences and imagination.
- Develop a wide range of art and design techniques in using colour, pattern, texture, line, shape, form and space.
- Learn about the work of a range of artists, craft makers and designers, describing the differences and similarities between different practices and disciplines, and making links to their own work.

By the end of this unit....

All children will:

- Be able to use a wide range of materials creatively.
- Share their ideas, experiences and imagination using drawing and painting.
- Use colour, pattern and shape to design.
- Learn about the work of artists.

Most children will:

- Be able to use a range of materials creatively to design and make products.
- Share their ideas, experiences and Imagination using drawing, painting and sculpture.
- Select from and use a range of tools and equipment to perform practical tasks.
- Select from and use a wide range of materials and components according to their characteristics.

Some children will:

- Discuss similarities and differences between different artists,
- Develop a wide range of art and design techniques.



Key Vocabulary

Art, pencils, paint, sketch, artist, stamp, postage, design, outline, softly, materials, drawing, colour, pattern, texture, form, shape, collage, model.